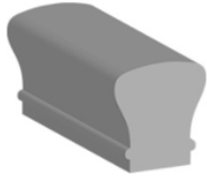
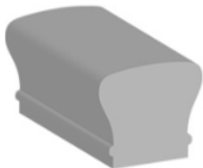


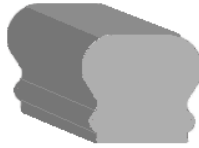
# Handrail Collection



**6010NGR**  
2-1/4 X 2-3/8  
● ■



**6210NGR**  
2-5/8 X 2-3/8  
● ▲



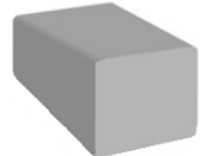
**WS400NGR**  
2-3/16 X 2-5/16  
● ◆



**WSWNGR**  
2-7/8 X 1-9/16  
● ■ ◆ ▲



**6002NGR**  
2-3/4 X 1-5/8  
● ■ ◆ ▲



**E4E234NGR**  
2-3/4 X 2-3/4  
● ■ ◆ ▲



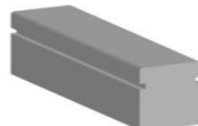
**6770NGR**  
2-1/4 X 1-3/4  
● ■ ◆ ▲



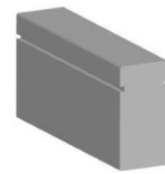
**WSENGR**  
1-11/16 X 3-1/2  
●



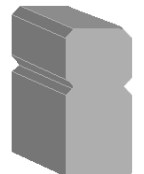
**WSCFNGR**  
2-5/8 X 1-5/8  
● ■ ◆ ▲



**WSESG2NGR**  
1-11/16 X 2  
●



**WSESGNGR**  
1-11/16 X 3-1/2  
●



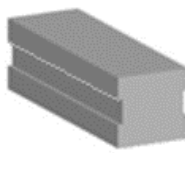
**WSCVNGR**  
1-11/16 X 3-1/2  
●



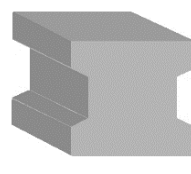
**WSCV214NGR**  
2-1/4 X 3-1/2  
● ■ ◆ ▲



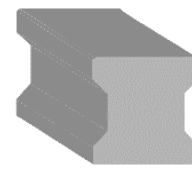
**6000NGR**  
1-3/4 X 2-1/8  
● ■



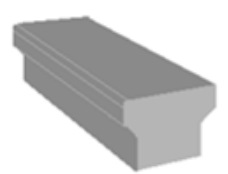
**6300NGR**  
2-1/4 X 2-1/8  
● ■ ◆ ▲



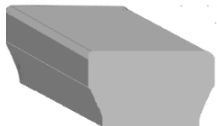
**6400NGR**  
2-1/4 X 2-1/8  
● ■ ◆ ▲



**6006NGR**  
2-1/4 X 2-7/16  
● ■ ◆ ▲



**6012NGR**  
2 1/4 X 1 5/8  
●



**4429**  
2-5/8 X 1-5/8  
● ■ ◆ ▲



**901**  
1-3/4 X 1-5/8  
WALL RAIL



**M877**  
1 3/4 X 1 5/8  
WALL RAIL



**3508**  
2-1/4 X 1-1/8  
WALL RAIL



**F6042**  
2-1/4 X 1-9/32  
WALL RAIL



**E4E112NGR**  
1-1/2 X 1 1/4  
WALL RAIL

Groove sizes    1/2" ●    1-1/4" ■    1-1/2" ◆    1-3/4" ▲

## Wood Species



Red Oak

Maple

Poplar

Walnut

Aspen

Pine

Alder

White Oak



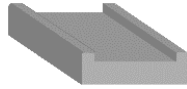
## Shoe Rail Collection



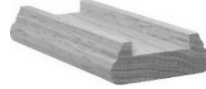
**600212S**  
2-3/8 X 3/4  
1/2" GROOVE



**600114S**  
2-3/8 X 3/4  
1-1/4" GROOVE



**6001134S**  
2-3/8 X 3/4  
1-3/4" GROOVE



**F6045**  
2-1/4 X 3/4  
1-1/4" GROOVE



**6006**  
2-3/4 X 1  
1-3/4" GROOVE



**WSCNGS**  
3-1/4 X 3/4  
NO GROOVE



**WSC12S**  
3-1/4 X 3/4  
1/2" GROOVE



**WSC134S**  
3-1/4 X 3/4  
1-3/4" GROOVE



**WSC212S**  
2 X 3/4  
1/2" GROOVE



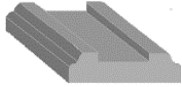
**WSW312NGS**  
3-1/2 X 3/4  
NO GROOVE



**WSW312134S**  
3-1/2 X 3/4  
1-3/4" GROOVE



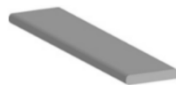
**WSW12S**  
3-1/2 X 3/4  
1/2" GROOVE



**WSW112S**  
2-3/4 X 3/4  
1-1/2" GROOVE



**WS12F**  
1/2" x 3/8"  
Fillet



**6107**  
1-1/4" x 1/4"  
Fillet



**WS112F**  
1-1/2" x 3/8"  
Fillet



**WS134F**  
1-3/4" x 3/8"  
Fillet



**WSW134F**  
1-3/4" x 7/16"  
Fillet

### Have you heard of KMPI?

KMPI is an acronym for Knife Marks Per Inch. It's a "measuring stick" indicator on wood millwork manufacturing standards. The higher the KMPI, the better the milling quality as it indicates the millwork was machined slower with more attention given to detail.

This results in a smoother finish that requires less sanding and finishing preparation to create a superior product while saving money!

KMPI	KMPI (knife marks per inch)
Woodland	18 - 26 +
Competitors	12 - 18



*When you see and experience a home crafted with Woodland mouldings, stairworks and doors ... YOU KNOW!*

**Woodland Supply & MFG. LTD.**  
867 McLeod Avenue - Winnipeg, Manitoba R2G 0Y4  
204-668-0079 | Toll Free 1-(888)-665-0343  
woodlandsupply.ca