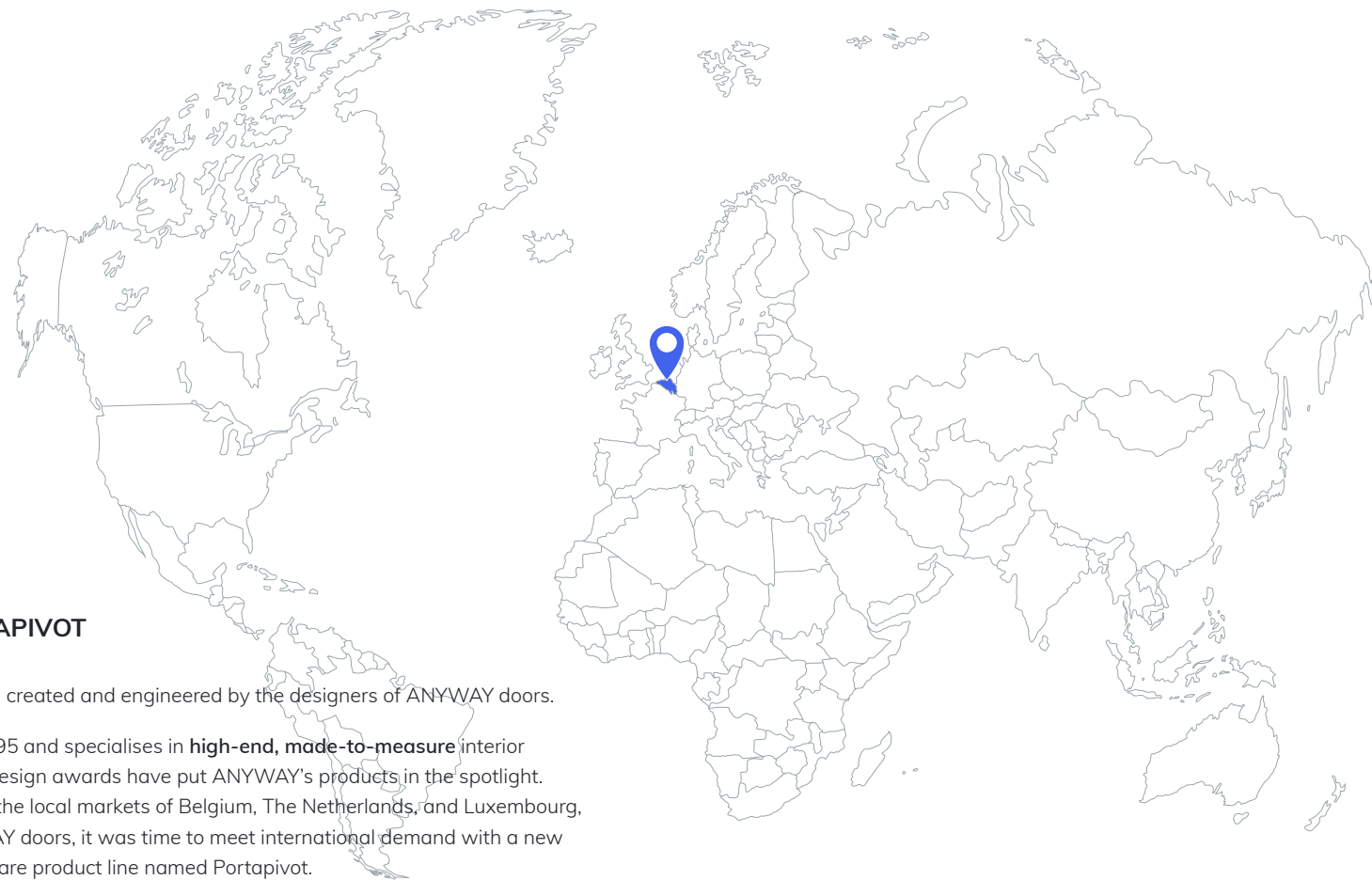


***All you need is skills,
we supply the rest.***

Introduction	2
Stealthpivot	11
Door systems	17
› Portapivot 5730	19
› Portapivot Mini-Max	21
› Portapivot Glass	23
› Slideways 5730	25
Fixed partitions	27
Accessories	31
› door grips	32
› grid profiles	35
Lookbook	36



THE ORIGIN OF PORTAPIVOT

Portapivot is a Belgian brand, created and engineered by the designers of ANYWAY doors.

ANYWAY was founded in 1995 and specialises in **high-end, made-to-measure** interior doors. Various international design awards have put ANYWAY's products in the spotlight. After focusing exclusively on the local markets of Belgium, The Netherlands, and Luxembourg, with the brand name ANYWAY doors, it was time to meet international demand with a new high-end architectural hardware product line named Portapivot.

Since the launch in 2017, Portapivot has shipped its 'pivoting room dividers' and patented 'Stealthpivot' hinge technology to high-end interior professionals and local craftsmen in over 85 countries.

As of 2021, Portapivot is part of Theuma Group.





INGENIOUS HARDWARE SOLUTIONS DESIGNED TO CREATE VISUAL MASTERPIECES

At Portapivot, we combine the strength of our technology, engineering and design capabilities, with local craftsmanship all over the world.

Our process is fast, efficient and simple. Your local craftsman configures and orders the desired setup on our website. We produce the hardware and ship it with the necessary installation accessories.

Glass and other finishing sheet materials (e.g. MDF, Trespa, ...) are not included and should be purchased locally.

- › Product design backed by more than 30 years of experience
- › Easy assembly & installation due to B2C experience
- › High-tech hardware
- › Unlimited decorative finishing possibilities
- › Made-to-measure sets





ANODISED ALUMINIUM

Anodising is an electrochemical process which converts the metal surface into a decorative, durable and corrosion resistant oxide layer. This aluminium oxide is not applied to the surface like a coating or paint, but is fully integrated with the underlying aluminium substrate. This means it cannot chip or peel.

Anodised aluminium is considered environmentally safe, producing few harmful effects on land, air, or water.

- › Attractive appearance whilst retaining metal character
- › Durable, corrosion-resistant and colourfast
- › Easy to recycle (Cradle to Cradle)
- › Easy to reuse (Circular Economy)
- › Low maintenance

We offer 5 different finishes: black, bronze, gold, silver and stainless steel.





STEALTHPIVOT HINGE

Portapivot's high-tech pivot hinges are to be fitted inside the door panel and therefor invisible, hence the name 'Stealth Pivot'.



Example of a Stealthpivot NL and XL hinge



Stealthpivot XL securely packaged

STEALTHPIVOT - PATENTED TECHNOLOGY

Stealthpivot is a compact and innovative pivot hinge system that can be fitted inside virtually any door leaf. The hinge is designed to be mounted on top of a finished solid surface **without the need for any built-in fixtures**. Its high-tech comfort closure works in all swing directions and can be set up for 180° and 360°, like a carousel. When fitted and installed, the hinge remains invisible, hence the name 'StealthPivot'.

Our hinge system makes it possible to create impressive Room Dividers up to 150 kg that feel as light as a feather.

- › **Stealthpivot NL**
For pivot doors up to 75 kg. Features an adjustable offset axis point that can be set up from 85 mm up to 1/2.
- › **Stealthpivot XL**
For larger pivot doors up to 150 kg. Features an adjustable offset axis point that can be set up from 150 mm* up to 1/2.

* The minimal axis depends on the total door width

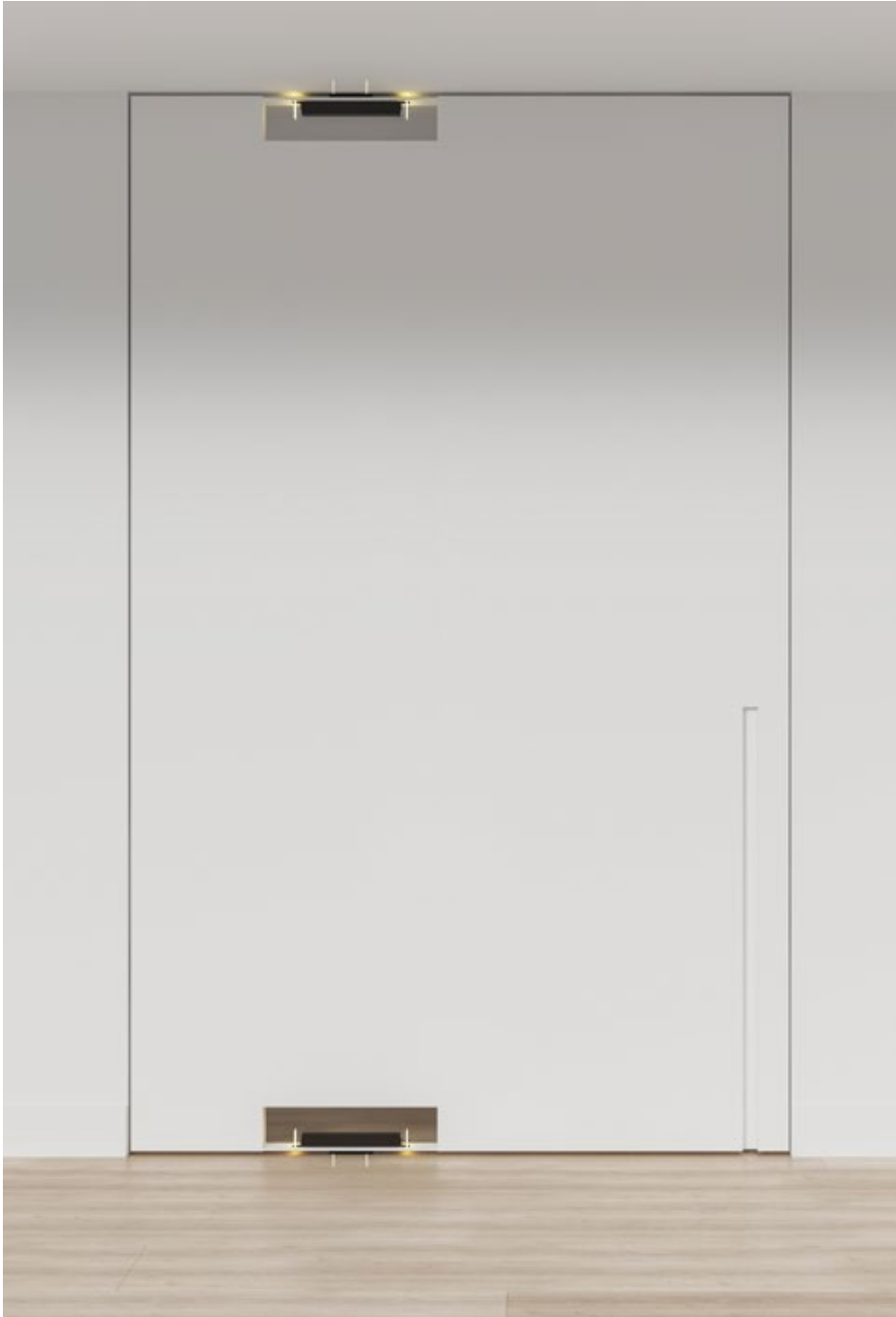
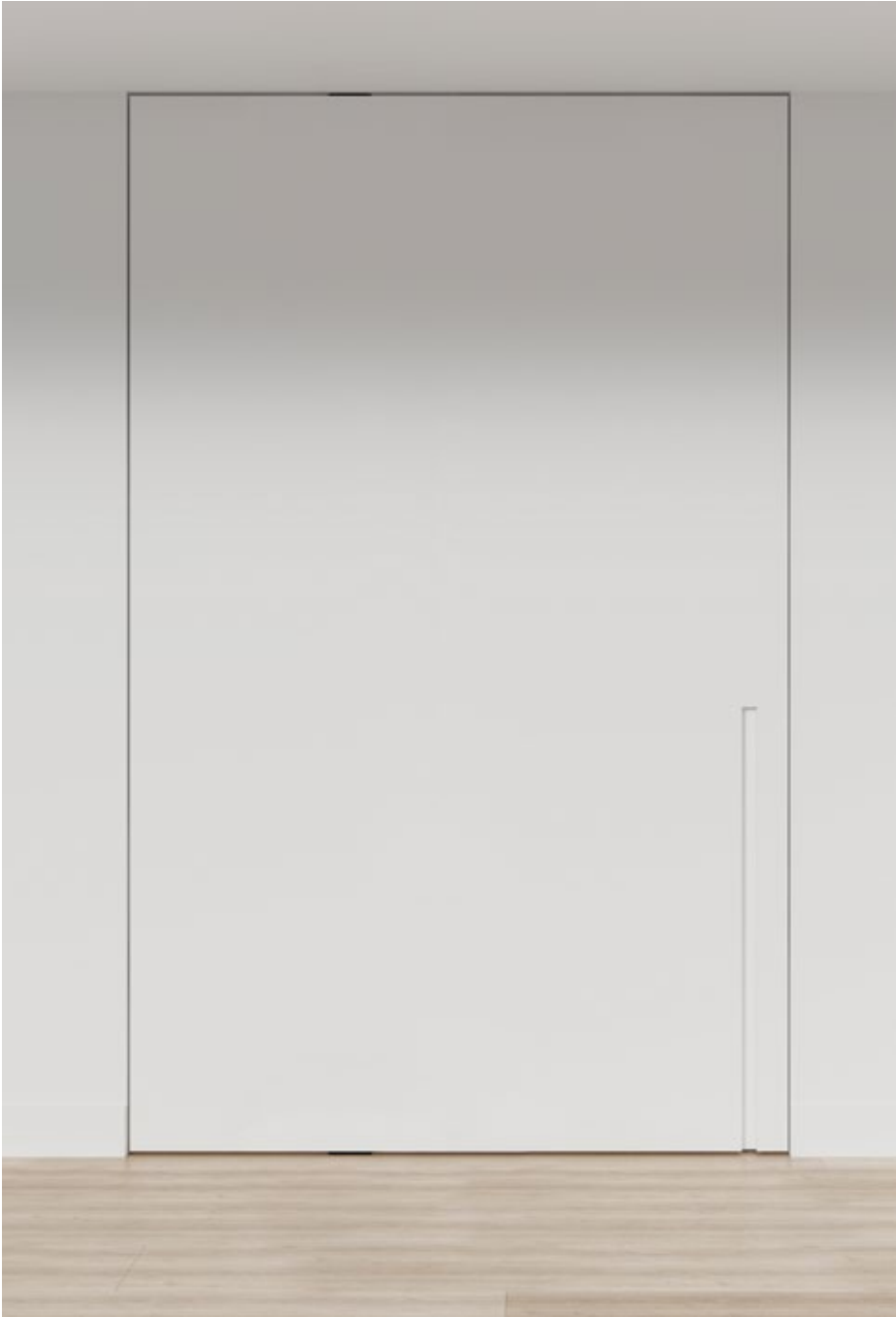
EN1191 – Resistance to repeated opening and closing = C5
200.000x cycles (durability tested and approved by WOOD.BE)



EASY INSTALLATION

A great deal of attention went into easy integration and installation on site, to ensure that the resulting pivot system could be used in both new and existing homes, regardless the construction. Stealthpivot hinges are always mounted on top of the finished floor and a solid or reinforced ceiling surface, without the need for any built-in fixtures.

The minimal anchoring (2 screws and plugs ± 4.5 cm deep) allows installation on any type of surface. The hinge mounts are equipped with patented 0° positioning parts. Optional magnets and 1-way accessories can be installed if necessary.





DOOR SYSTEMS

Discover our made to measure door systems. You can configure your ideal pivot or sliding door using our online 3D configurator.



PORTAPIVOT 5730

Portapivot 5730 is made with a **minimal 57 x 30 mm frame**.

The frame is made of high quality anodised aluminium and is available in five decorative finishes; black, bronze, gold, silver, and stainless steel.

The frame can be fitted with **6 or 8 mm thick tempered or laminated glass**.

Optional aluminium grid profiles can be installed on top of the glass to create a fully customised design.

- › **5730 door frame**
Compatible with 6 and 8 mm safety glass
- › **DJ 2030 (optional door jambs)**
Minimal aluminium door jamb, ideal for situations where additional stability is required (top hinge fixation), or when skirting boards are installed in the door opening.



5730



DJ 2030



PORTAPIVOT MINI-MAX

Minimal frame, maximal glass.

The Portapivot **Mini-Max frame** only measures **20 x 38 mm** and is **combined with a glass patch set**. This door system is available in black and silver high quality anodised aluminium.

Portapivot Mini-Max can be fitted with **8 mm thick tempered or laminated glass**.

Optional aluminium grid profiles can be installed on top of the glass to create a fully customised design.

- › **2038 door frame**
Compatible with 8 mm safety glass
- › **DJ 2030 (optional door jambs)**
Minimal aluminium door jamb, ideal for situations where additional stability is required (top hinge fixation), or when skirting boards are installed in the door opening.



2038



DJ 2030



PORTAPIVOT GLASS

A set of compact **glass patch fittings**, designed to fit seamlessly into any interior style. The patches are made of high quality anodised aluminium and are available in black and silver.

Portapivot Glass can be fitted with any type of **10 mm thick tempered glass**.

- › **GLASS NL**
Glass patch fittings for Stealthpivot NL
Dimensions: H 60 x W 232 mm
- › **GLASS XL**
Glass patch fittings for Stealthpivot XL
Dimensions: H 60 x W 330 mm



GLASS NL



GLASS XL



SLIDEWAYS 5730

Slideways 5730 combines the Portapivot 5730 frame profile with a minimal rail system, featuring soft-close technology.

The frame can be fitted with **6 or 8 mm thick tempered or laminated glass**.

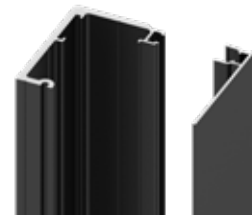
Our sliding door system is engineered with practical design in mind and features soft-close technology. The aluminium rail can be mounted on the wall or ceiling.

Slideways 5730 can be combined with fixed partitions to create large divisions in both residential and home-office setups.

Optional aluminium grid profiles can be installed on top of the glass to create a fully customised design.



5730



SLIDEWAYS RAIL + cover



FIXED PARTITIONS

Minimal anodised aluminium profiles for fixed partitions.



FIXED PARTITION FRAMES

Portapivot offers a range of minimal anodised aluminium profiles for fixed (glass) partitions. These profile systems can be used as standalone walls or in combination with various other Portapivot and Slideways setups.

- › **Fixed partition Mini-Max**
Compatible with 8 mm glass
Combines best with Portapivot's Mini-Max door system
- › **Fixed partition 3530**
Compatible with 6 and 8 mm glass
Combines perfectly with any Portapivot door system
- › **Fixed partition 5730**
Compatible with 6 and 8 mm glass
Combines best with Portapivot's 5730 door system (pivot or slideways)



MINI-MAX



3530

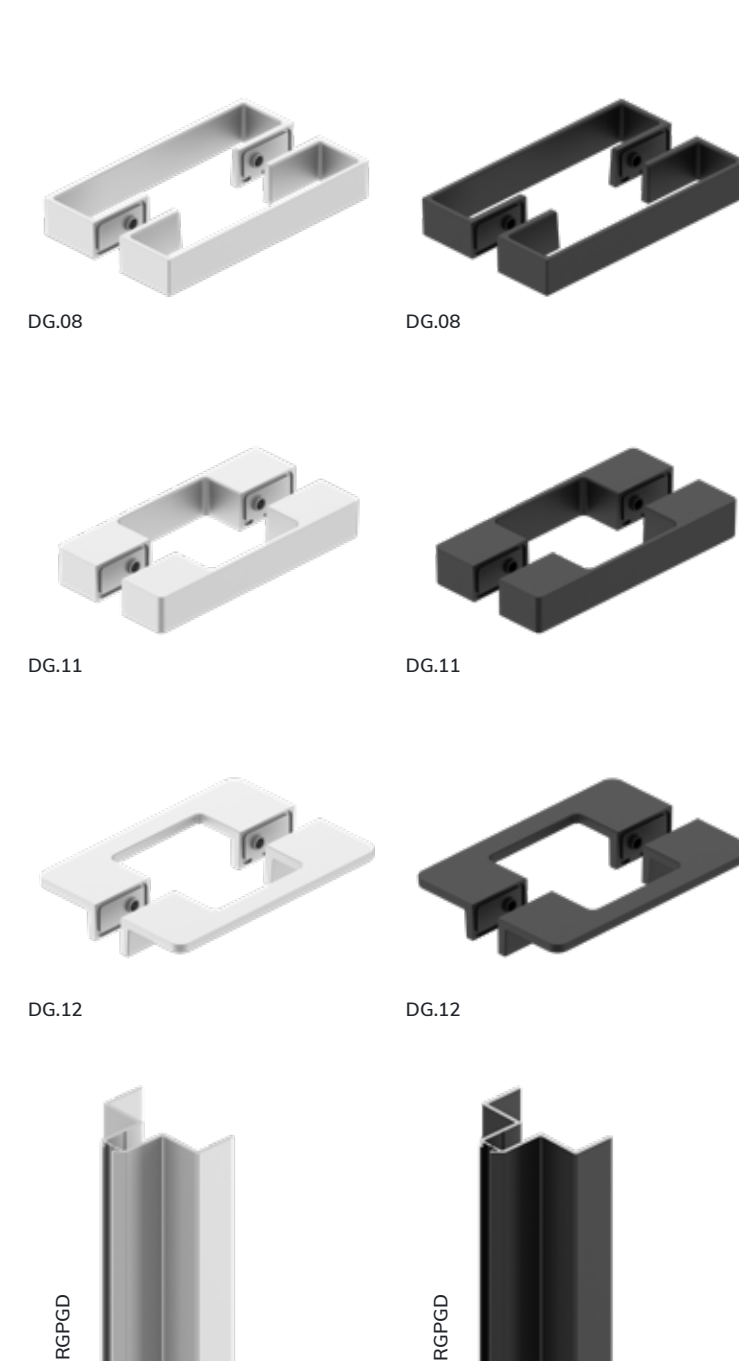
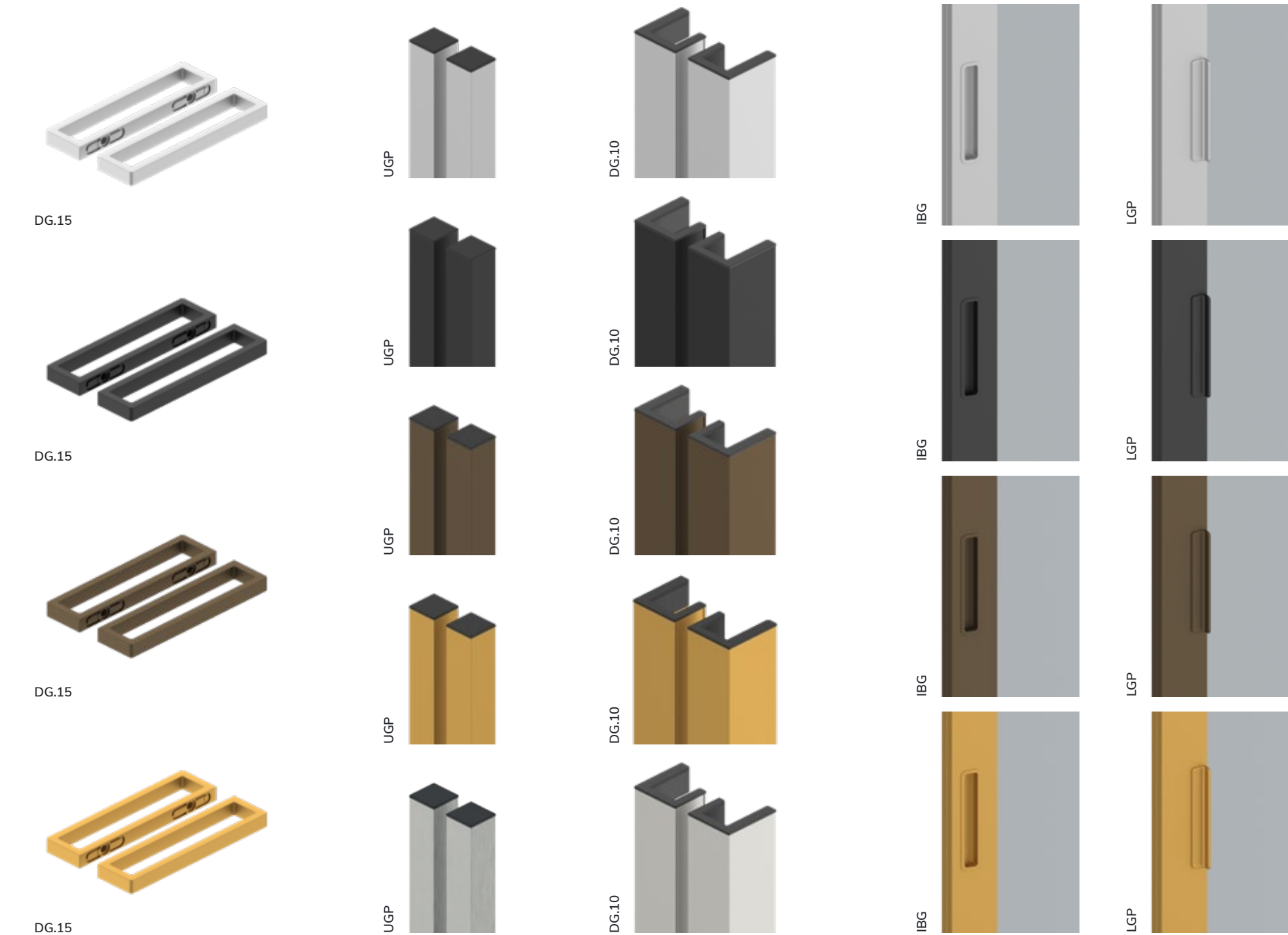


5730



ACCESSORIES

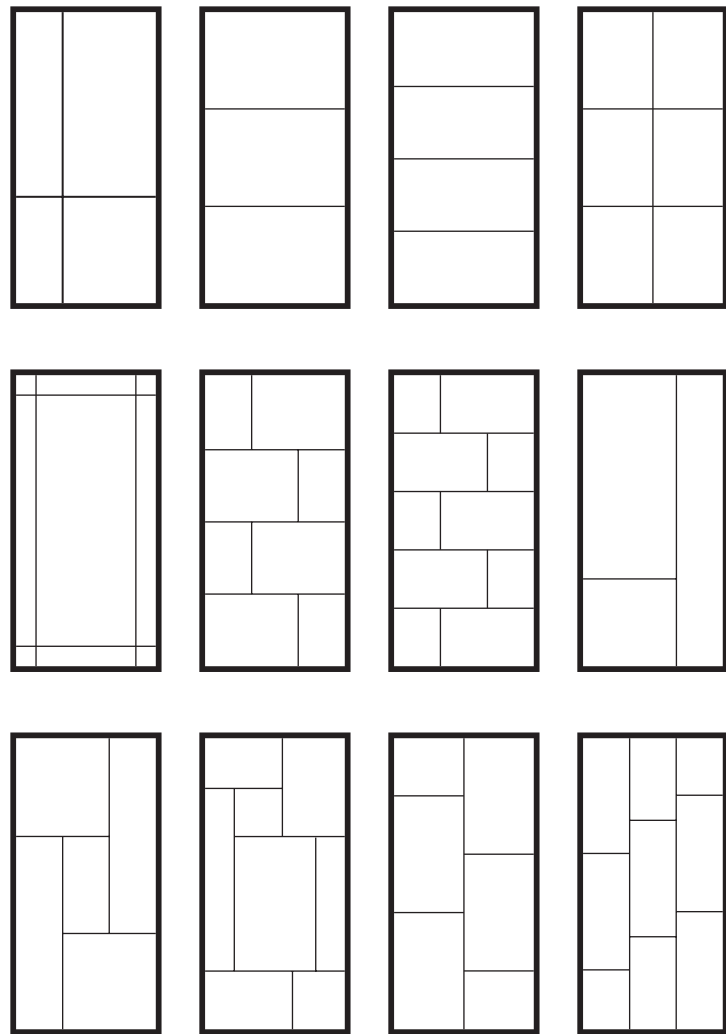
Portapivot offers a selection of door handles and grid profiles in anodised aluminium, matching the colour of your desired door system.



DOOR GRIPS

Complete the look of your door by choosing one of Portapivot's minimal door grips. Our door grips are designed for push/pull pivot doors, and for sliding doors.

- › **DG.15**
Dimensions: W 200 x H 15 x D 50 mm
Can be mounted horizontally or vertically
- › **UGP**
Dimensions: W 20 x D 20 mm
Suggested sizes: 750 mm - 1130 mm - full height
- › **DG.10**
Dimensions: W 38 x D 34 mm
Suggested sizes: 500 mm - 750 mm - 1130 mm - full height
- › **IBG (*sliding doors only*)**
Dimensions: H 125 x W 25 x D 12 mm
- › **LGP (*sliding doors only*)**
Dimensions: H 125 x W 20 x D 12 mm
- › **DG.08, DG.11 and DG.12**
Dimensions: W 200 x H 30 mm
Can be mounted horizontally or vertically
- › **RGP (*portapivot GLASS*)**
Always full height



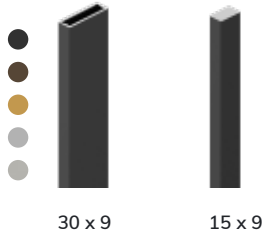
Grid pattern examples

GRID PROFILES

Anodised aluminium grid profiles, for optional decorative purposes. They are fixed on top of the glass with double-sided tape and offer infinite customisation.

The grid profiles are compatible with Portapivot **5730** and **Mini-Max** doors system, and are available in all four finishes: black, bronze, gold, and silver.

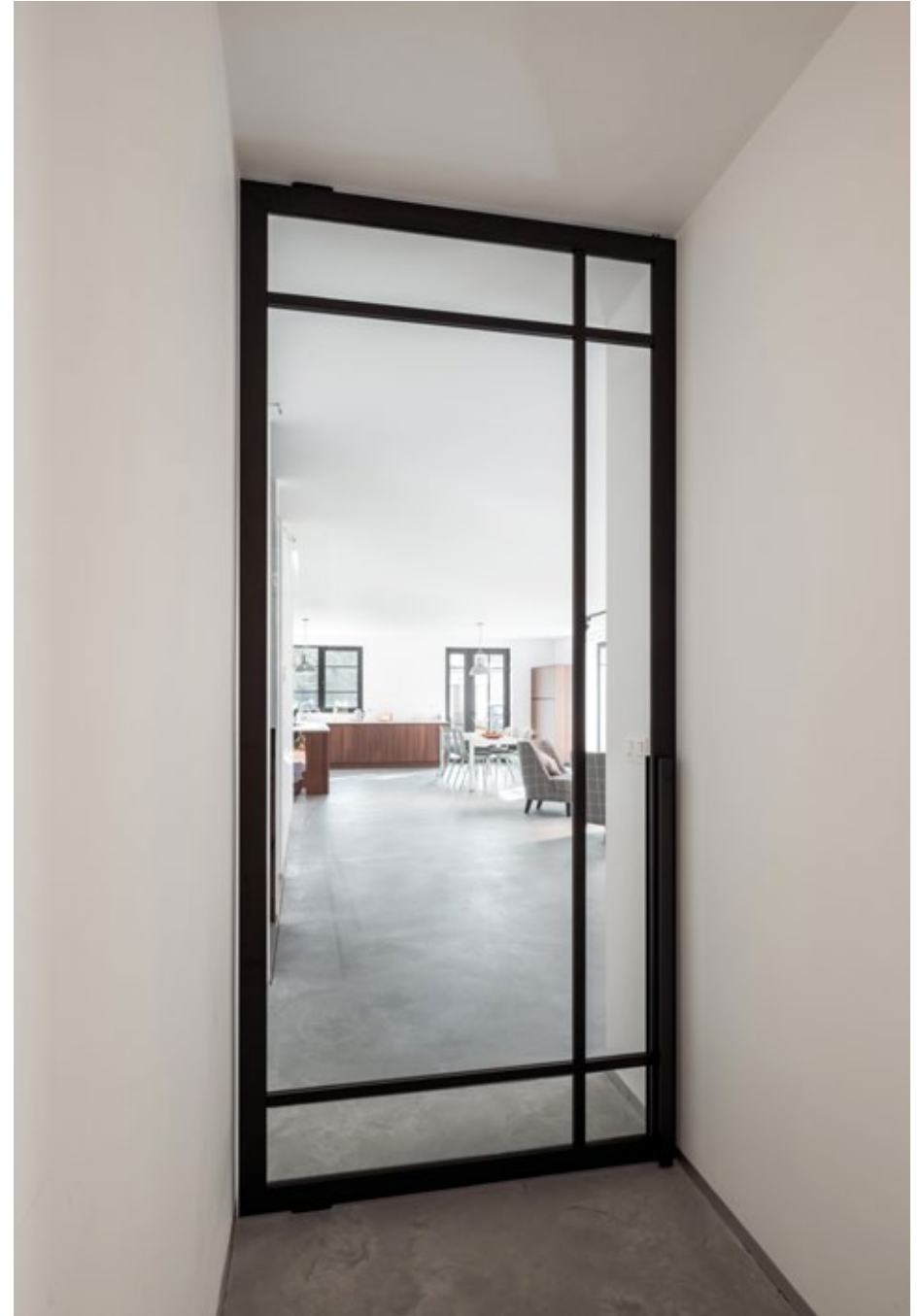
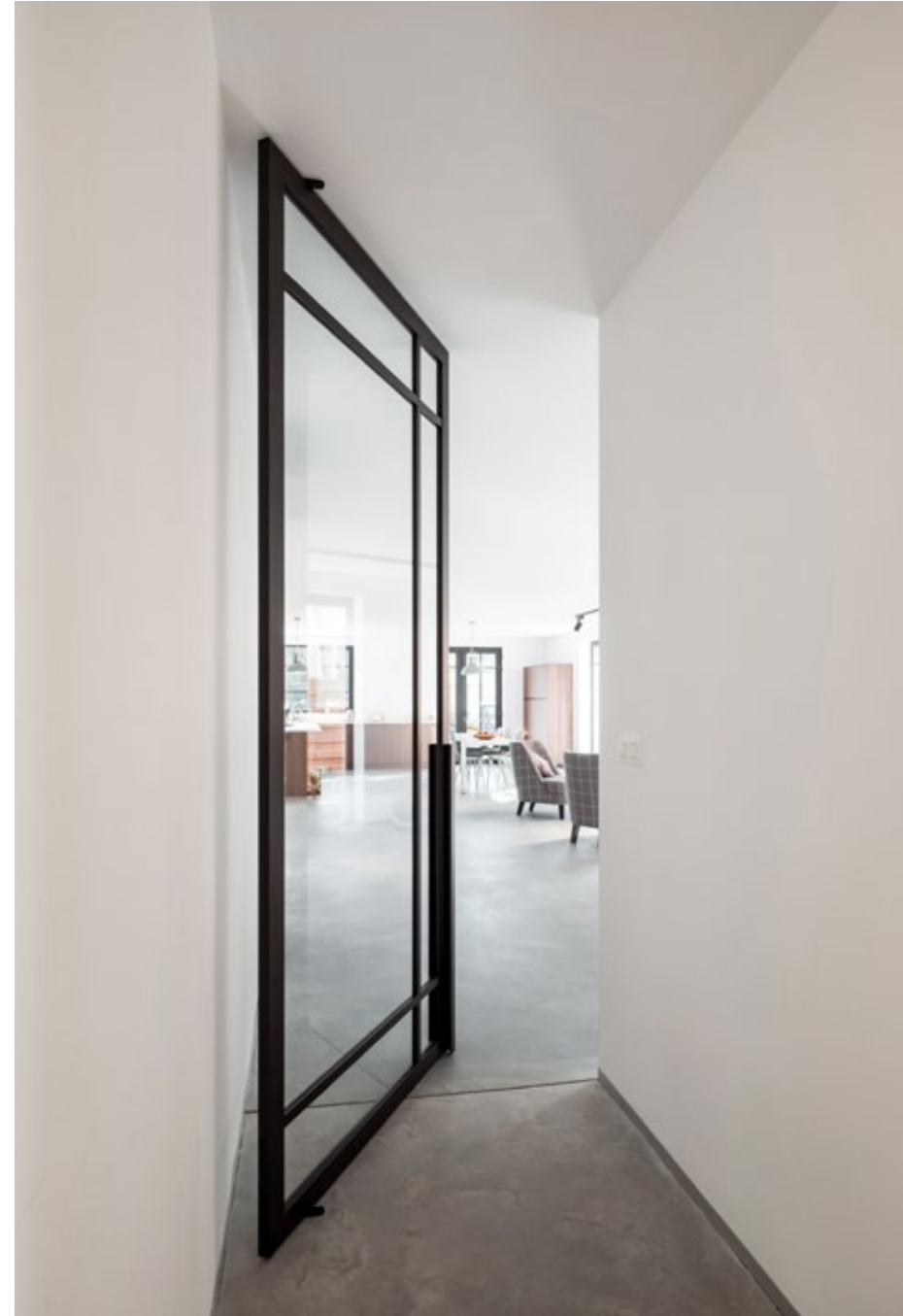
- › **30 x 9 grid profile**
Dimensions: W 30 x D 9 mm
- › **15 x 9 grid profile**
Dimensions: W 15 x D 9 mm



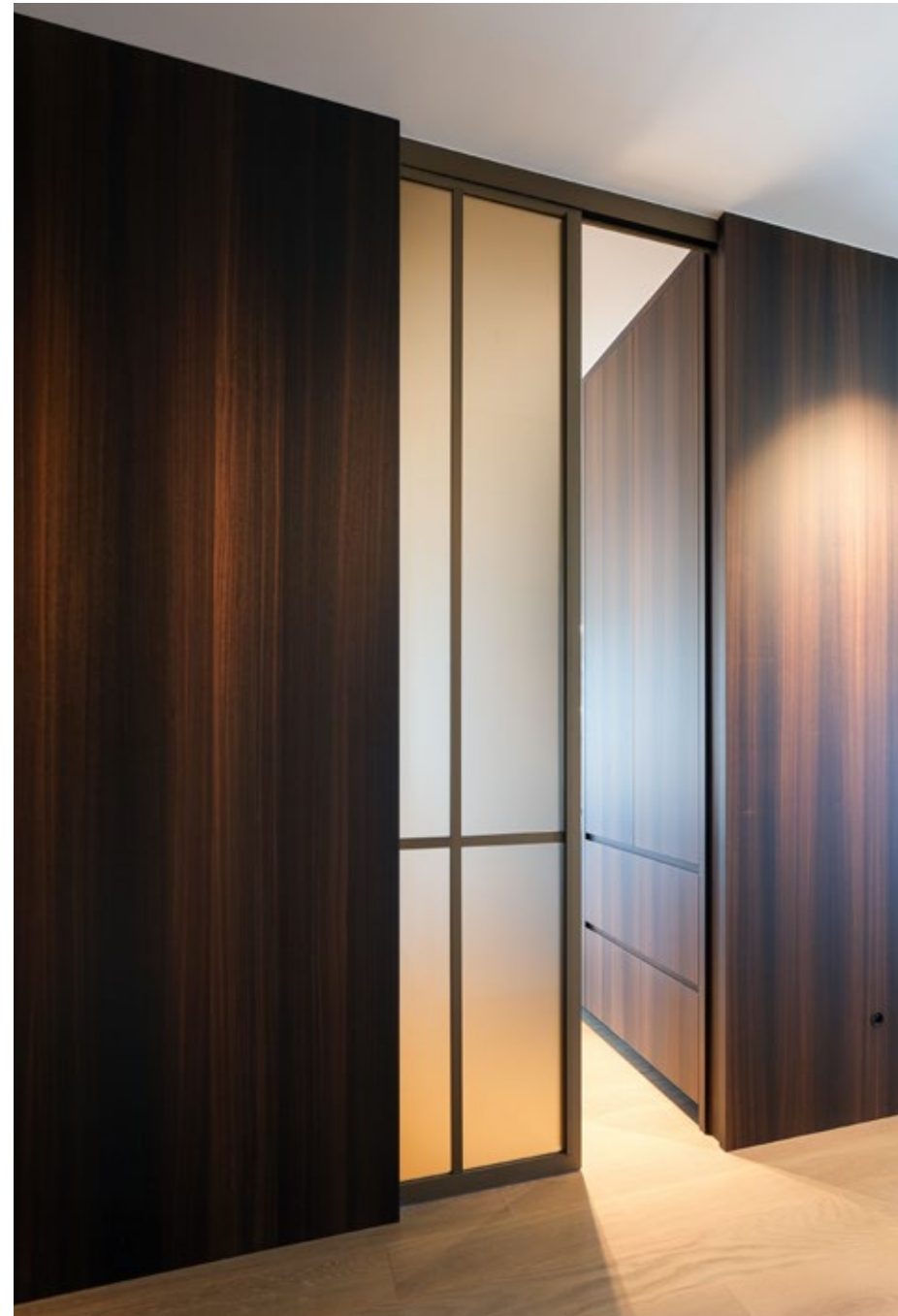
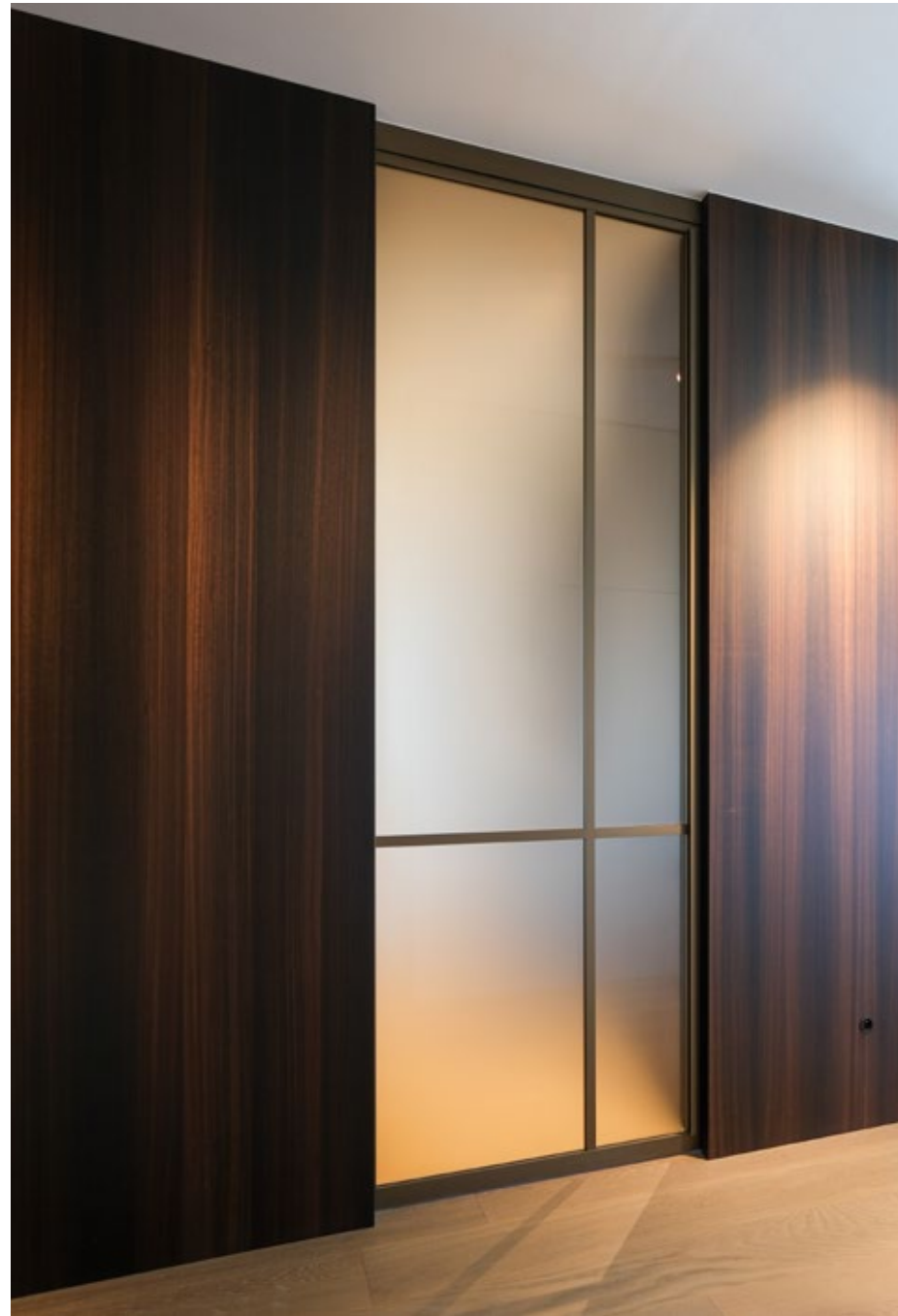
30 x 9

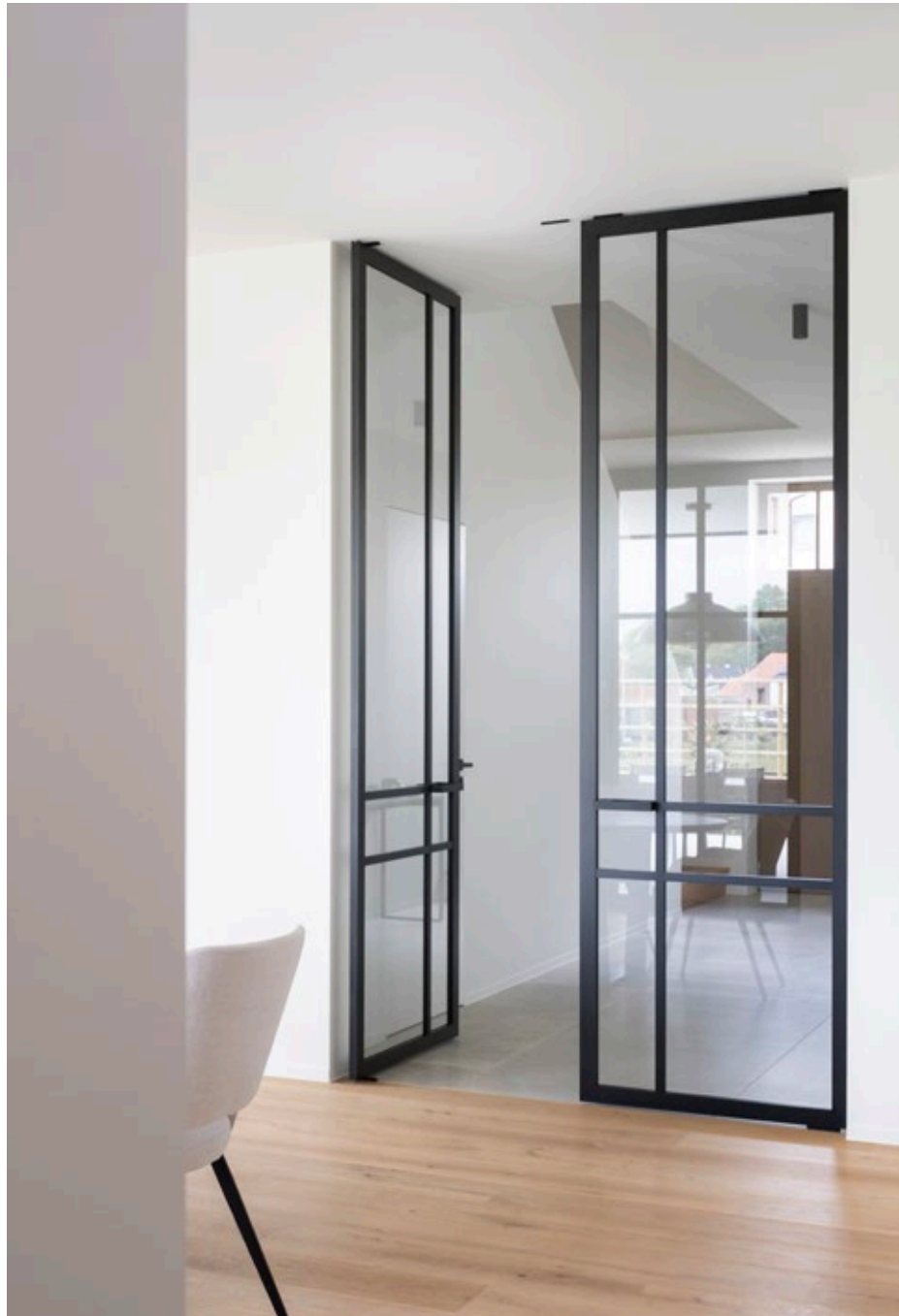
15 x 9

Portapivot lookbook



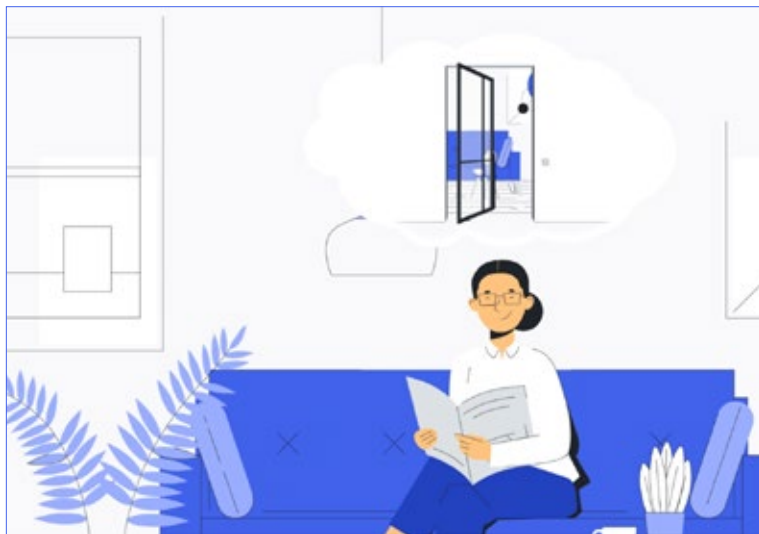




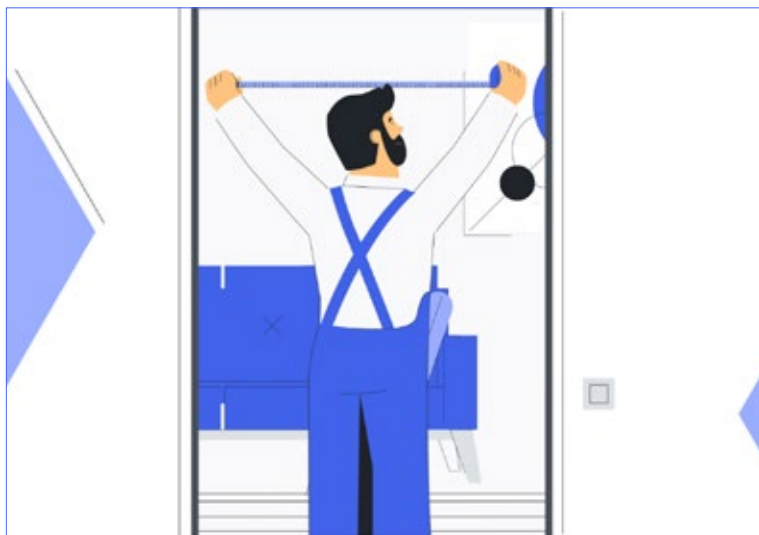




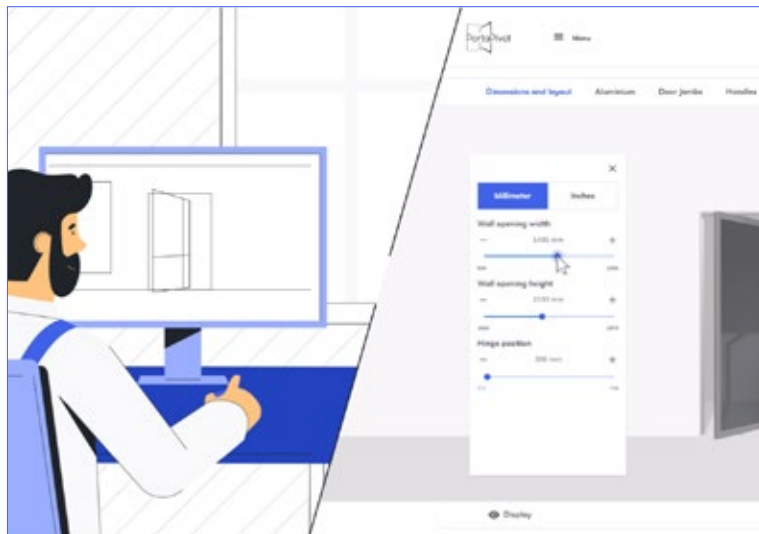
1



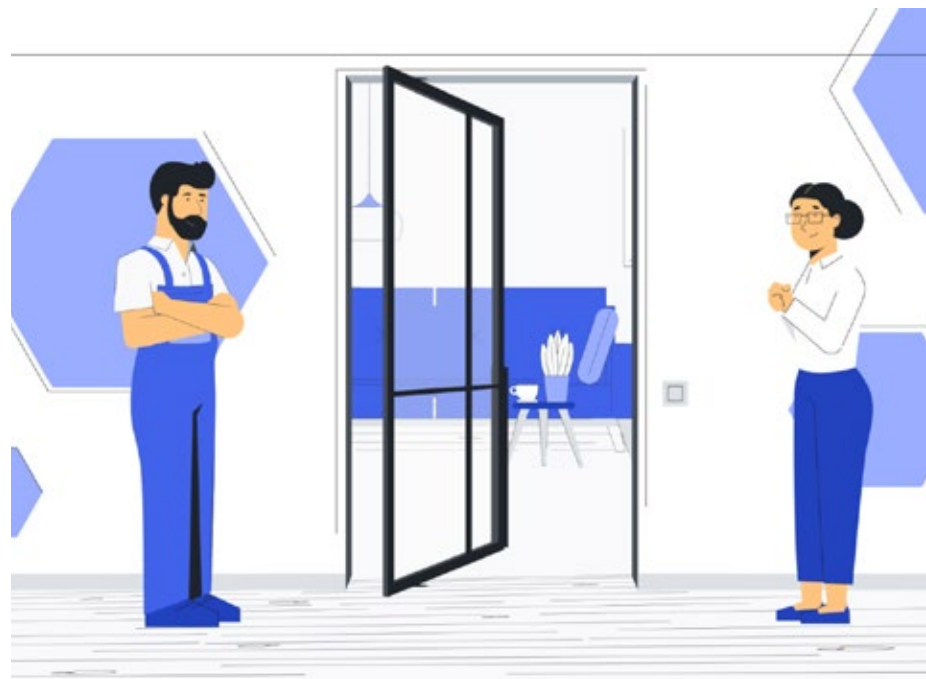
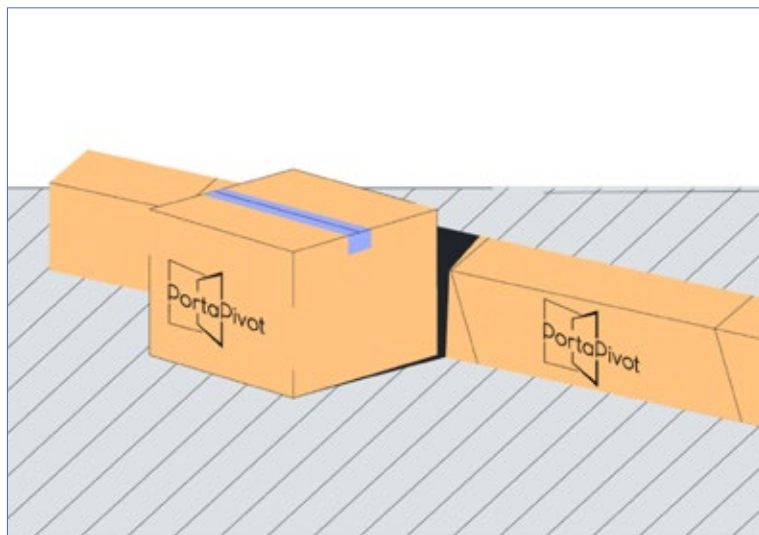
2



3



4



OUR PROCESS IS FAST, EFFICIENT AND SIMPLE

Portapivot manufactures the aluminium profiles to fit your wall opening and ships them with the appropriate hardware and installation accessories.

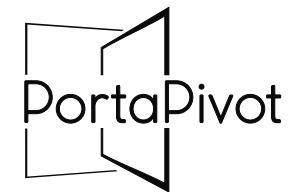
Once your order is processed, we send you the exact glass or material dimensions, so you can purchase these at your local partner.

All our solutions are designed for easy assembly and installation. We offer step-by-step guidance to ensure a streamlined process, from design to installation.



"Our distinctive pivoting room dividers have the ability to completely **transform** a space.

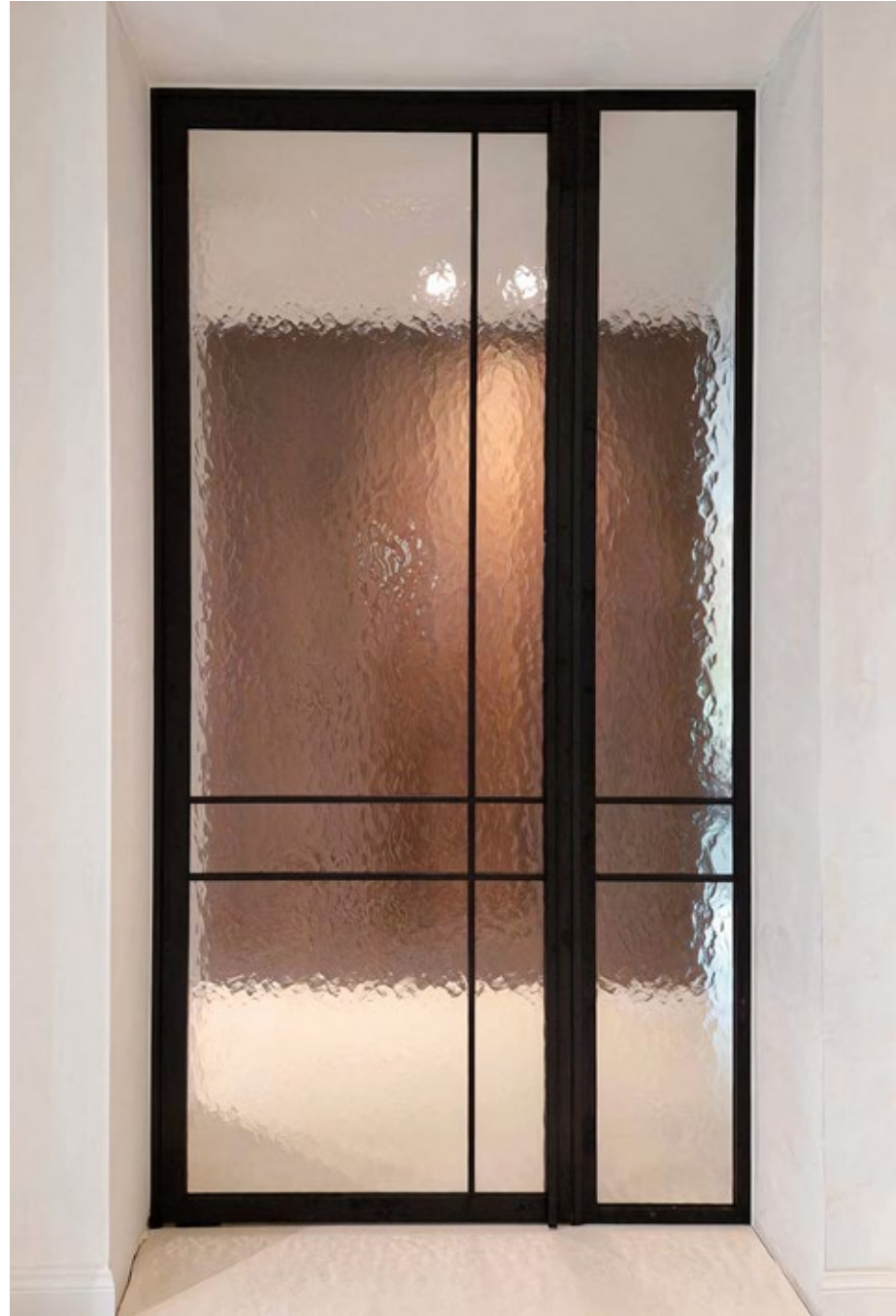
Not just by giving it a modern edge, but also by offering a modular way to open up space and letting in more light."



[instagram.com/portapivot](https://www.instagram.com/portapivot)

[facebook.com/portapivot](https://www.facebook.com/portapivot)

[pinterest.com/portapivot](https://www.pinterest.com/portapivot)



PORTAPIVOT BV

Nijverheidsweg 32B, 2240 Massenhoven, BELGIUM

www.portapivot.com

Copyright by PortaPivot 2025

Protected trademarks: StealthPivot, PortaPivot, Slideways